

What's New in Sage MIP Fund Accounting Version 10.2

Sage MIP Fund Accounting's latest update is here!

In the ever-changing landscape of tax compliance and accounting standards, all current Maintenance and Support subscribers can rely on Sage to keep you updated—not with just the latest tax reporting requirements and back-end technology enhancements, but also with time-saving enhancements to make you more productive! For additional information regarding version 10.2, please view the recorded What's New Webcast.

Notice Regarding Backward Compatibility

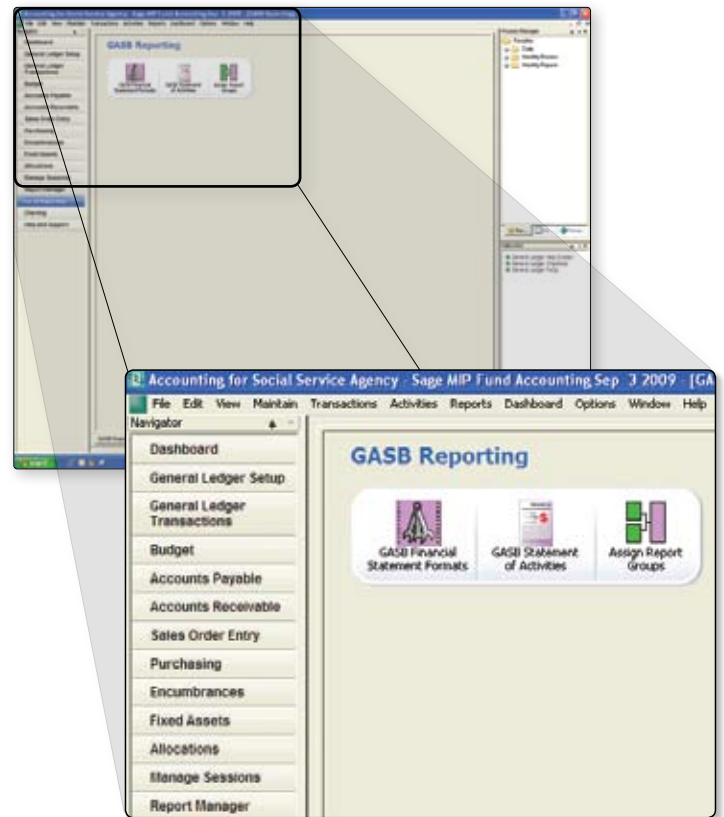
Technology is changing rapidly! In order to take advantage of the latest security and performance enhancements, please note that the next major release of Sage MIP Fund Accounting will phase out backward compatibility for several system software components, including SQL2000 and Windows 2000. **THIS IS ONLY A WARNING!** While no immediate changes are required to apply this update, please be prepared to migrate any systems using the configurations mentioned in KB article #306083 within the next 12 months.

Enhanced Customer Experience

- New in this version, we are pleased to announce the introduction of our Customer Enhancement Portal. Here you will be able to view existing enhancements and watch for status changes as well as the ability to submit your own ideas. Just go to Help > Submit Product Enhancement to share your feedback!
- Also launching in conjunction with this version of Sage MIP Fund Accounting are our new Sage Nonprofit and Government Solutions Communities where you can connect with other Sage customers in our forums, participate in community conversations, find products and services, and even engage with Sage software developers to share your unique User Experience that will help us make your Sage products even better!

More Reporting Options

- Form 990 reporting now includes Part 1, 8, 9, and 10 with both summary and detailed formats.
- New SUTA reporting fields are available within Payroll Pay Codes and Tax History reports that make it easier to reconcile, track, and file your state unemployment taxes.
- Our GASB module is more flexible than ever with improved settings for agencies in the public sector.



- Improved Report Drilling functionality from within financial statements allows you to more accurately search financial records.

Enhanced E-mail Functionality

- MAPI enabled EREQ e-mail messaging gives you the ability to send mail directly from within Sage MIP Fund Accounting more easily and with fewer configuration restrictions.
- E-mail employees with e-mail addresses that are stored in Sage MIP Fund Accounting directly from within the Payroll module with hyper-linked “click to mail” capability.

Expanded Import

Import has been expanded to include Update Timesheet and Update Item and Purchase Orders to streamline data processing and reduce errors created by large amounts of manually entered data.

Improved Development Tools

At Sage, we not only provide our customers with expanded features and functionality with every update, we also rely on wealth of knowledge shared by our extraordinarily talented development partners who build valuable add-on tools for Sage MIP Fund Accounting.

- By improving our Application Programming Interface for developing partners, Sage customers will enjoy more robust tools with the industry-specific features they need.

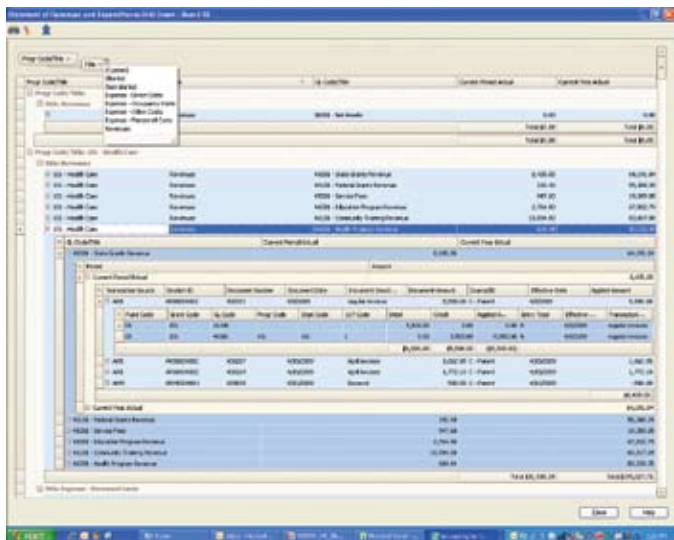
- Sage Nonprofit Solutions is also creating a development partner network through the Sage Development Partner Program. This program enables our 3rd party software developers to offer Sage customers additional time-saving add-ons and applications. For detailed information about this development partner program and complementary solutions available through this program, please visit [Sage Development Partner Program](#) website.

Changes from Sage MIP Fund Accounting Version 10.1

Compliance with IRS Regulations—Form 990 Changes

We understand that changes to the Form 990 impact your year-end reporting process. Therefore, we have enhanced the following items to help make your 2008 Form 990 preparation easier:

- Choose to map your Sage MIP Fund Accounting data to the historical 2007 full Form 990 or the “new” 2008 Form 990EZ.
- Generate reports to display either set of Form 990 mapping information.
- Future releases of Sage MIP Fund Accounting will continue to add functionality to help you comply with the latest IRS Form 990 changes and the threshold of filing requirements that pertain to each form type.



◀ Improved Report Drilling functionality from within financial statements allows you to more accurately search financial records.

Customer-Requested and Ease-of-Use Enhancements

We take your feedback and experience with our software seriously, and we always strive to improve our ease-of-use while adding functionality suggested by you, our customers. Here's a snapshot of the enhancements included in Version 10.1:

- New Tax forms and eFiling by Aatrix® Filter have been added, which will now accommodate batch processing of any federal or state tax form. Get Form Updates button is now available for both Payroll and 1099 tax form processing.
- The Scheduler module has been enhanced with the addition of an allocation calculation process as well as the ability to schedule calculation processes over night or even in a different month.
- A new Warehouse Control report which will greatly improve the monitoring and reordering of any Inventory items.

Changes from Sage MIP Fund Accounting Version 10

1099 Tax Forms and eFiling by Aatrix®

Now you can produce and perform on-screen edits to your 1099-INT, 1099-DIV, 1099-MISC, and 1099-R Forms. The forms are populated with data from your Accounts Payable module, so you can simply produce different types of 1099s in one application. Save encrypted historical files for future reference of each 1099 Form that has been printed and track more vendor information with reports. Accounts Payable Vendor Reports include the state tax withheld and 1099 form type as both content and items by page.

Visual Analyzer Module

The new Visual Analyzer module provides a graphical, interactive approach to financial data analysis. Quickly uncover trends, monitor budgets and spending, and share key information throughout your organization.

Enhancements to Inventory

Inventory items can be assigned multiple locations, and you can set expiration dates for inventory items with shelf lives such as prescription medications or food. Use the Check Item Availability functionality to easily check an item's location, expiration status, and availability at Purchase Orders, Electronic Requisitions, and Sales Order Entry. Inventory reports also provide more detail and present precise records.

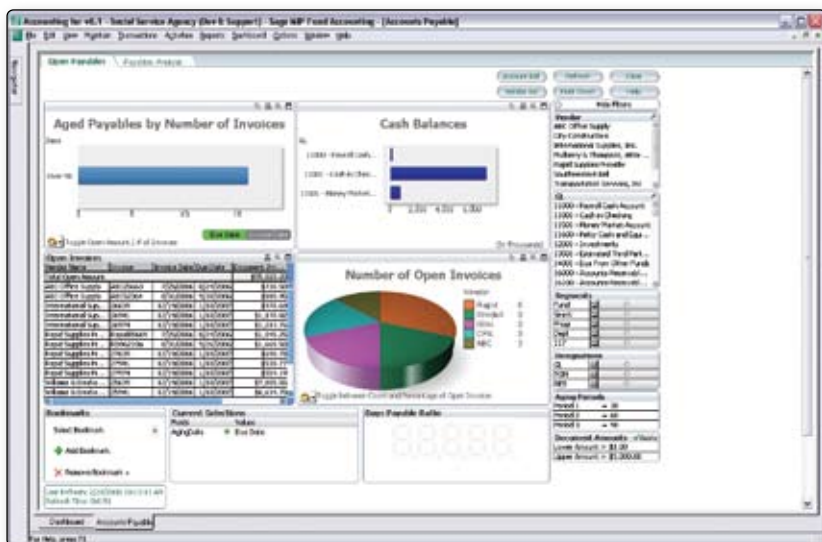
Report Binders and The Scheduler


Print your report binders on-demand, delivering report data to a PDF, e-mail, Excel spreadsheet, or printer files. Easily reorder reports within your report binder to address each recipient's needs. The Scheduler (formerly called NightShift Scheduler) provides options to print to PDF, Excel, or printer files. You can remove the report headers, footers, and page breaks of any Sage MIP Fund Accounting report as well as append an existing workbook when exporting reports to Excel.

Enhancements to General Functionality

There are many other enhancements in Version 10. For more information, please view the recorded What's New Webcast which you can access from within the product in the Help and Support section.

The new Visual Analyzer module provides a graphical, interactive approach to financial data analysis. Quickly uncover trends, monitor budgets and spending, and share key information throughout your organization.





“I think of the data in Sage MIP Fund Accounting as a cube. I can slice the data and analyze it one way, or turn the cube and slice it another way to analyze a different aspect.”

– Ric Barton
Financial Manager
Oregon Zoo Foundation